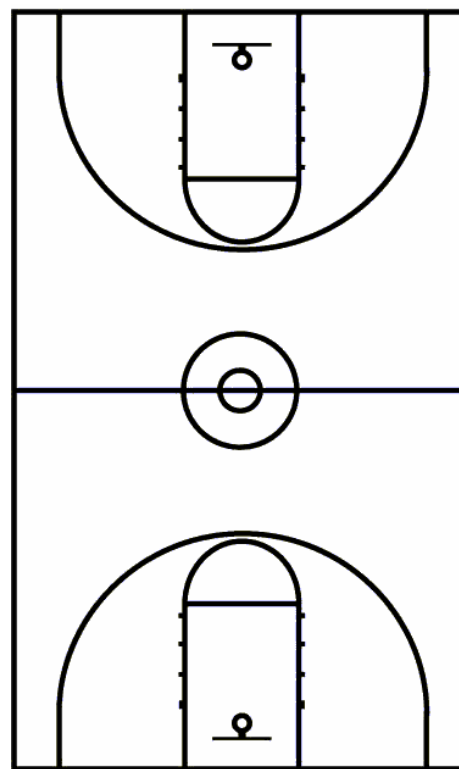
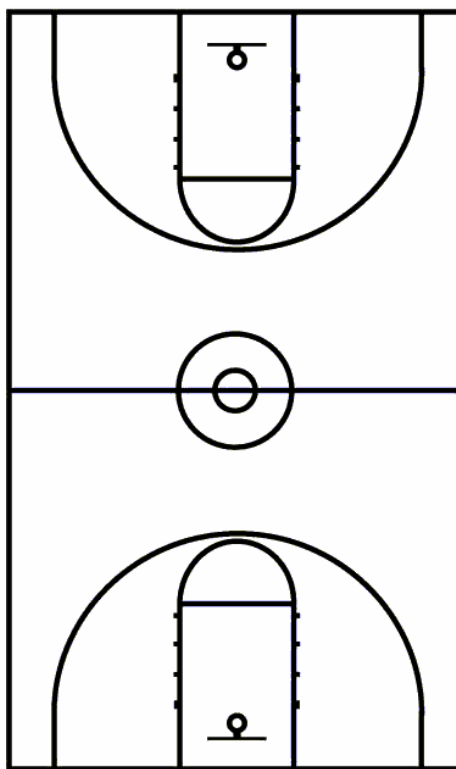
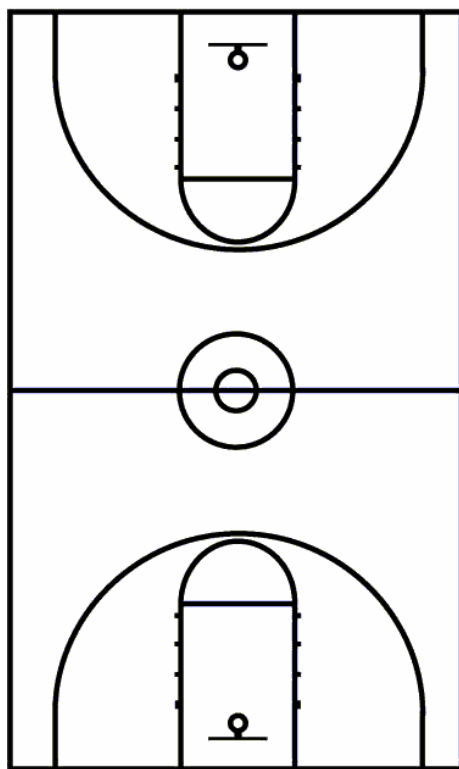


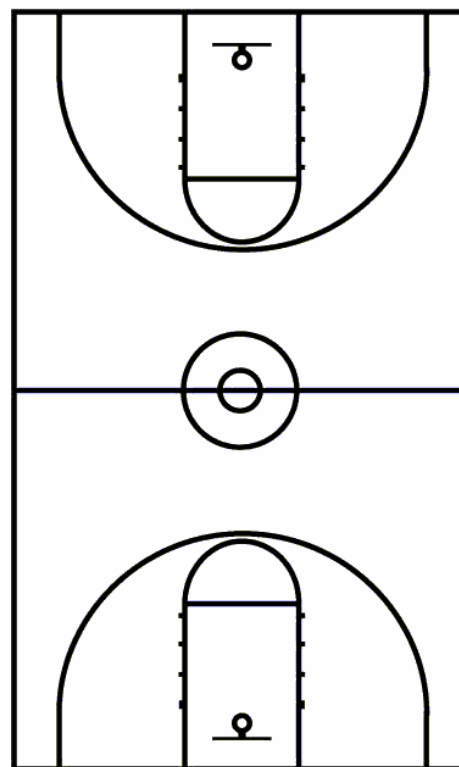
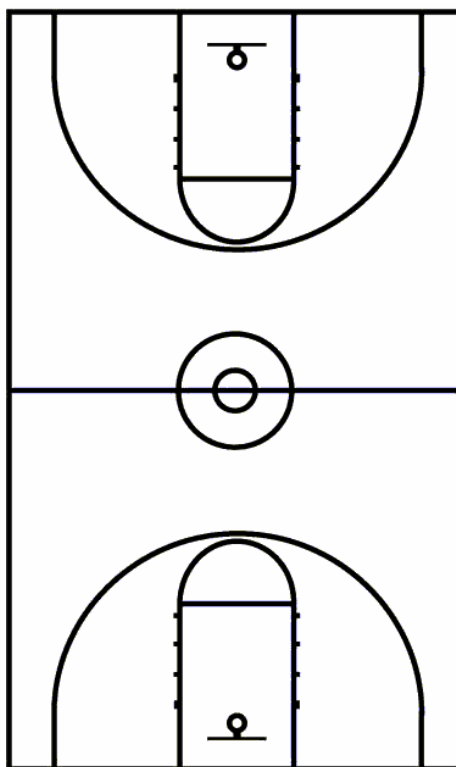
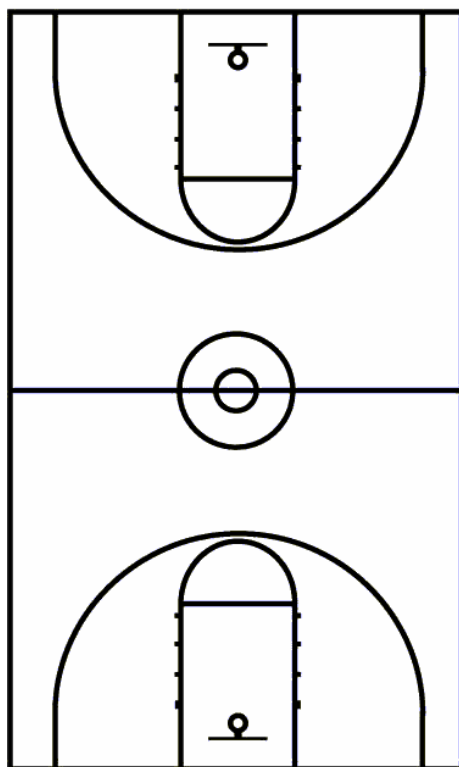
OFFENSE – Double, Rocket, Hammer, 55/45, Special, ISO, (SIX– vs 23 Zone),(DOUBLE – vs 1/3/1 Zone)



BLOB/SLOB Stack - DRAG

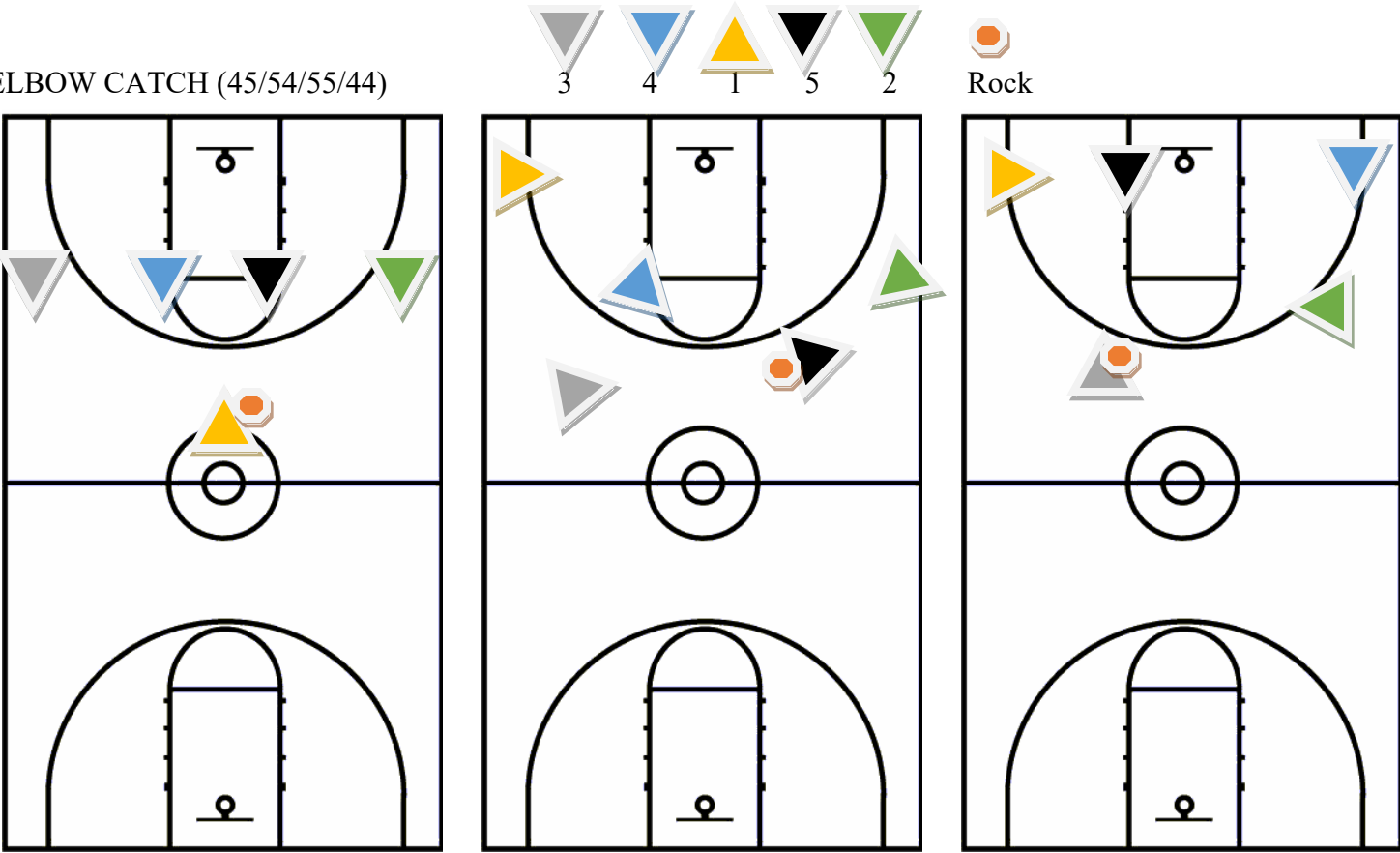


PRESS BREAK – Stack Entry (SIDE-MIDDLE-SIDE-MIDDLE-LAYUP)

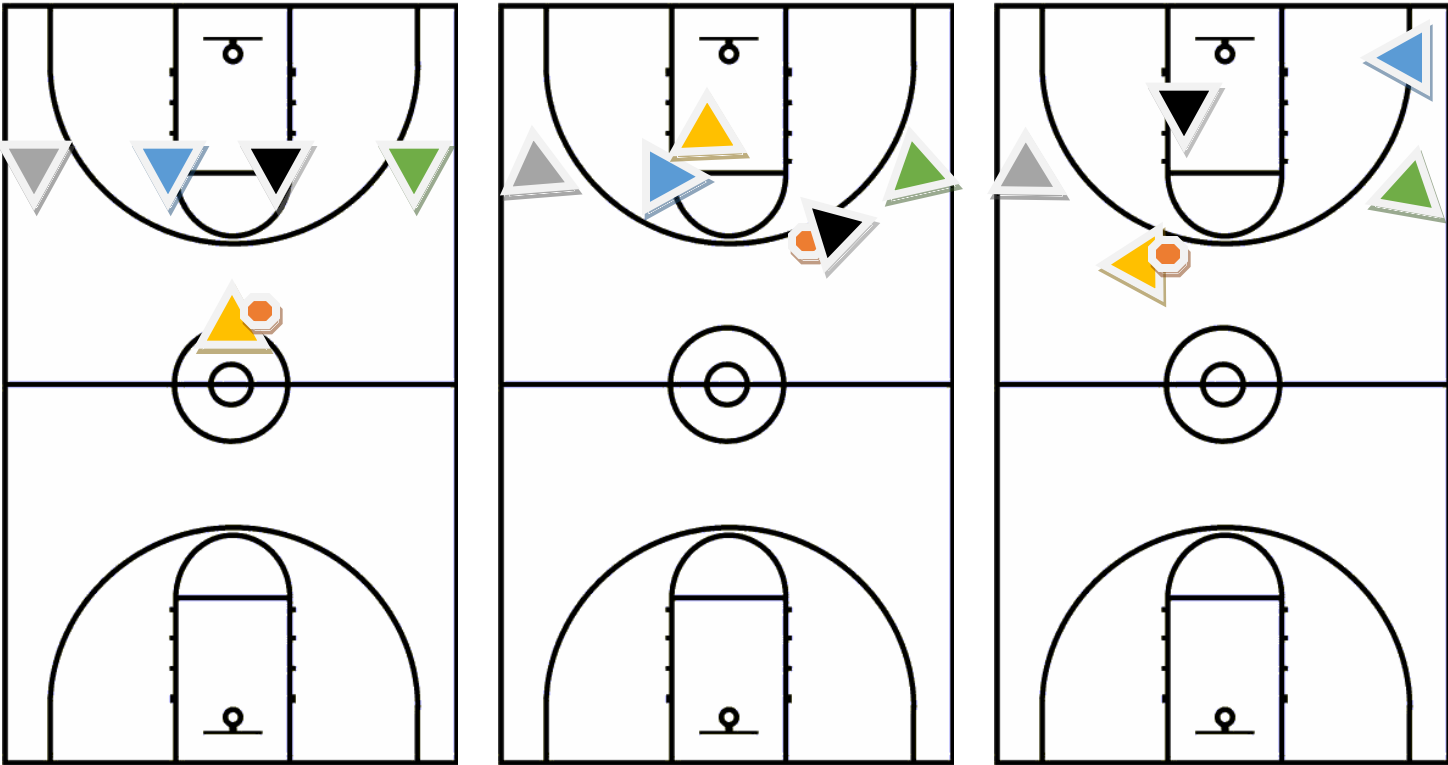


DEFENSE – Michigan (M2M), 23-STAY, 23-SECOND PASS TO MI, (122 FOOT IN THE PAINT)

55 – ELBOW CATCH (45/54/55/44)



SPECIAL 55 – ELBOW CATCH – GUARD SCREEN/FLARE



ROCKET – DOUBLE SCREEN OFF BALL


3

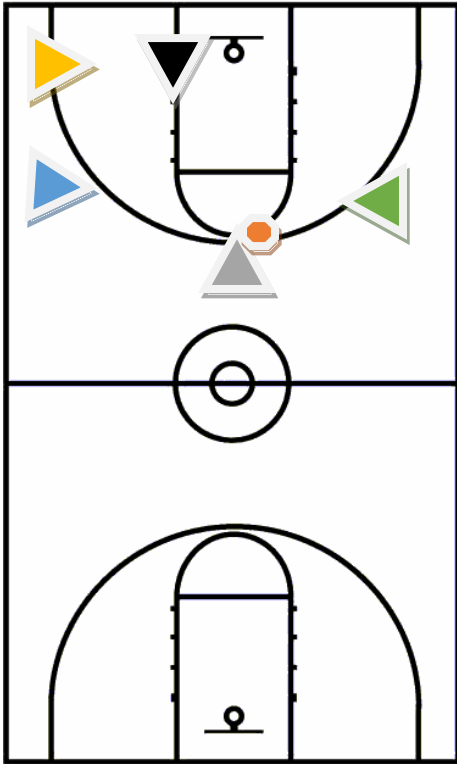
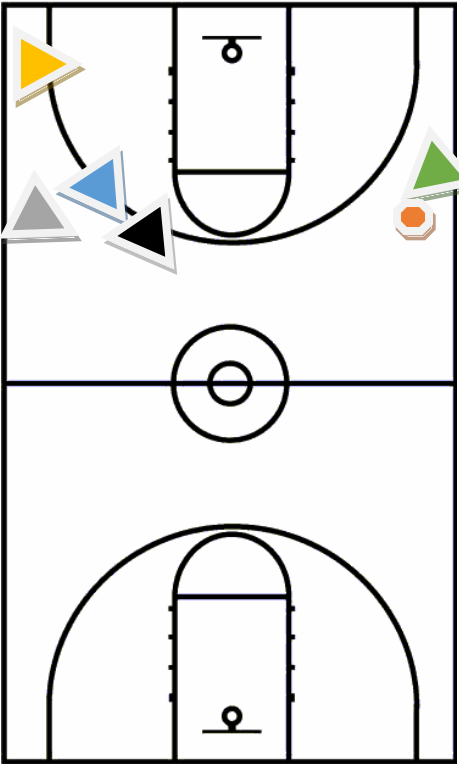
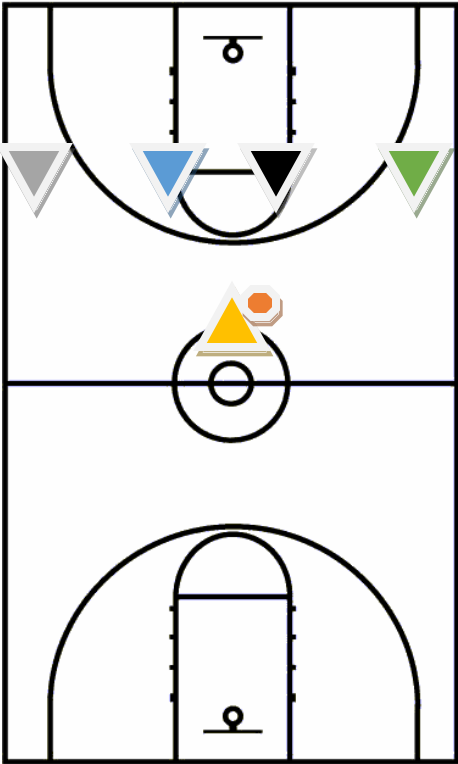

4


1

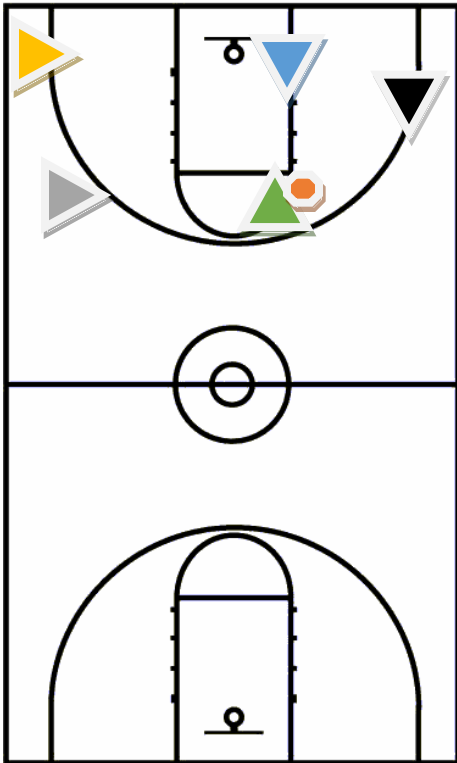
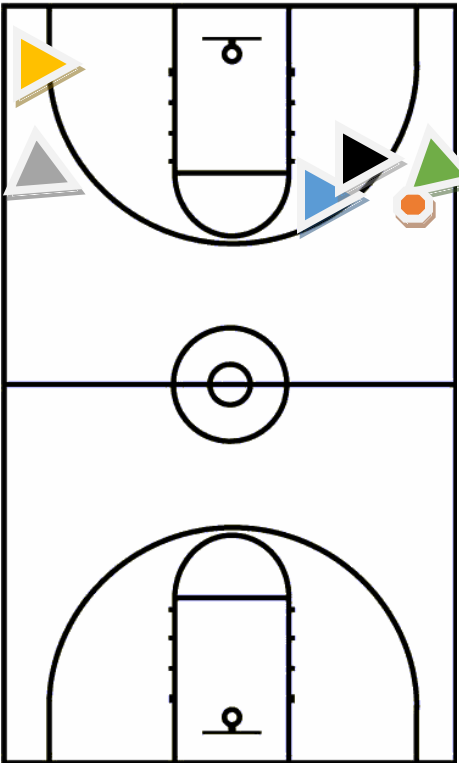
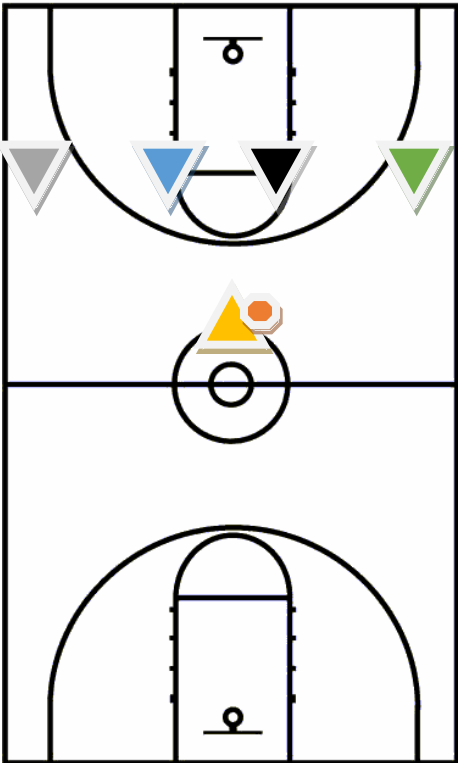

5


2

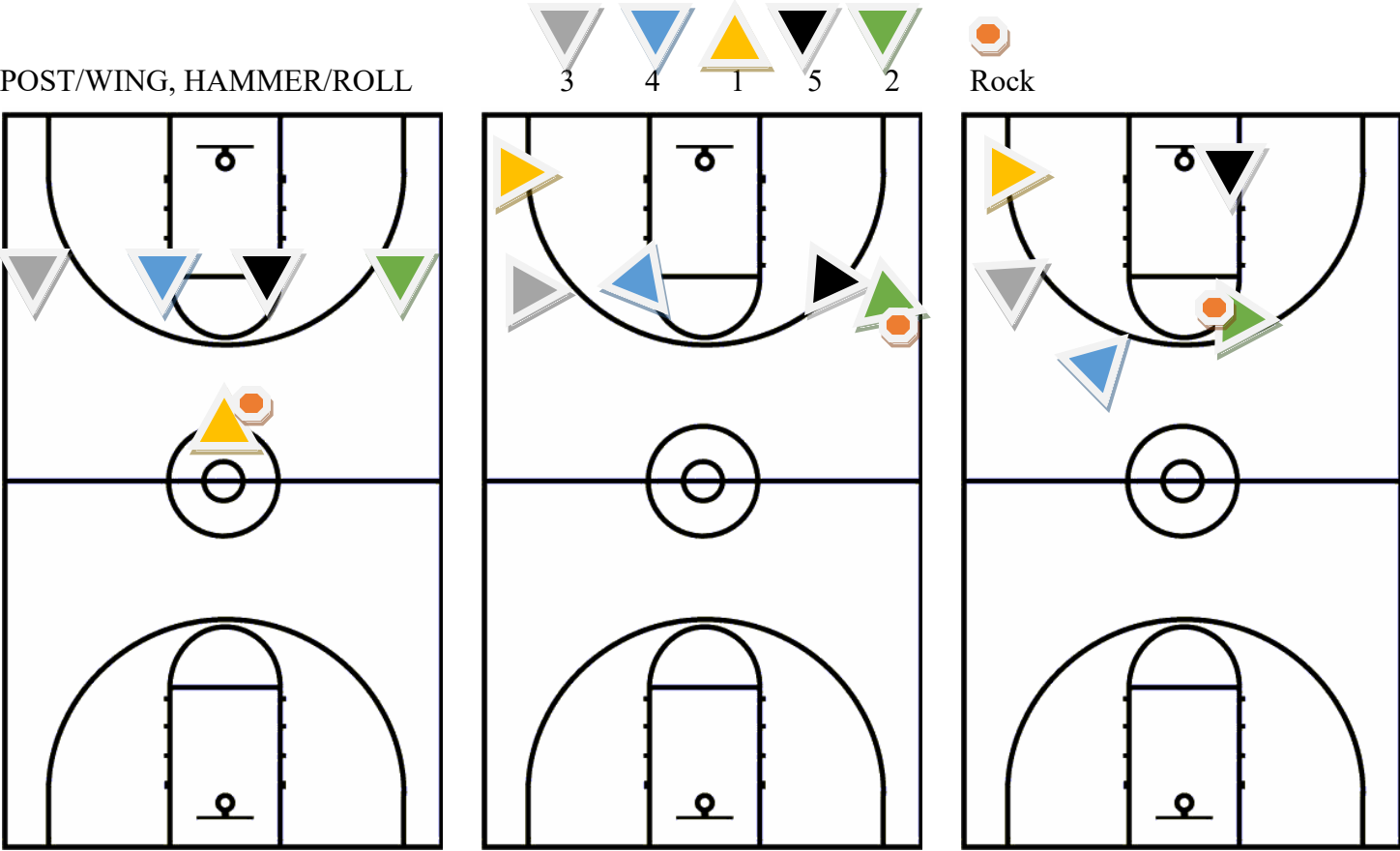

Rock



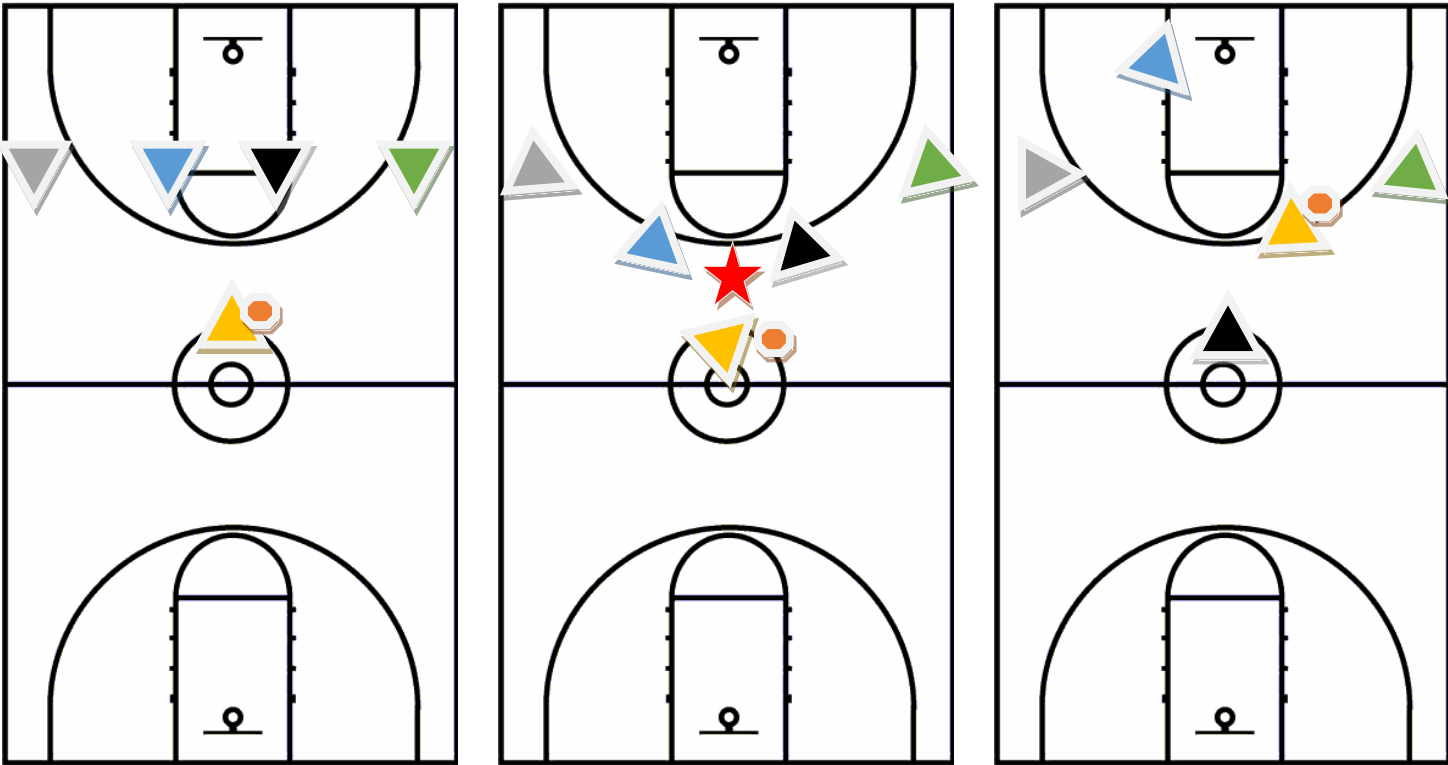
HAMMER – 5/4 DOUBLE SCREEN ON BALL, GUARD - DOWN/OUT



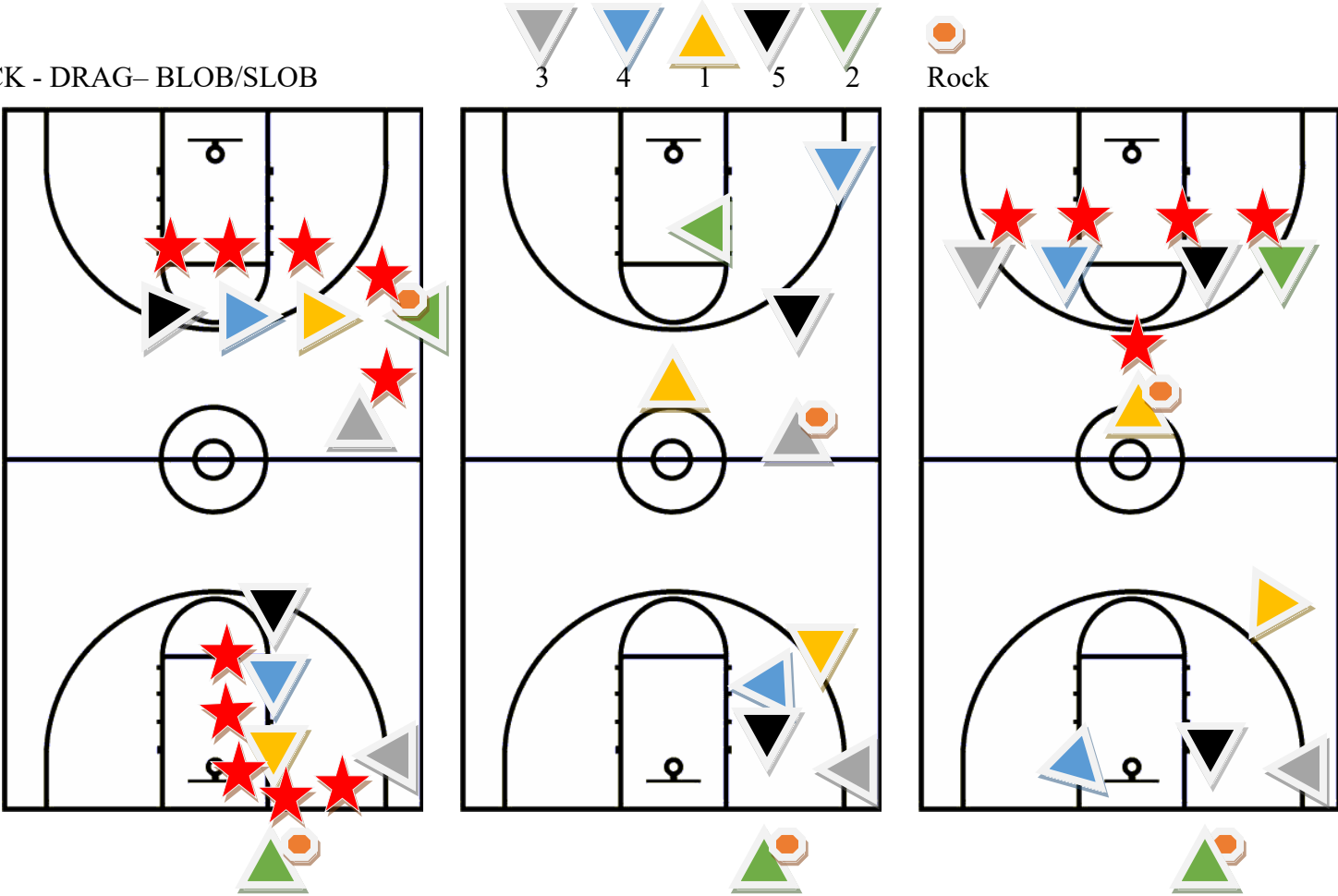
ISO - POST/WING, HAMMER/ROLL



DOUBLE – 5&4 DOUBLE SCREEN FOR (PG) – SCREEN/FLARE, BACK/ROLL “FREE YOUR PG”



STACK - DRAG- BLOB/SLOB



PRESS BREAK – STACK ENTRY (SIDE-MIDDLE-SIDE-MIDDLE-LAYUP)

